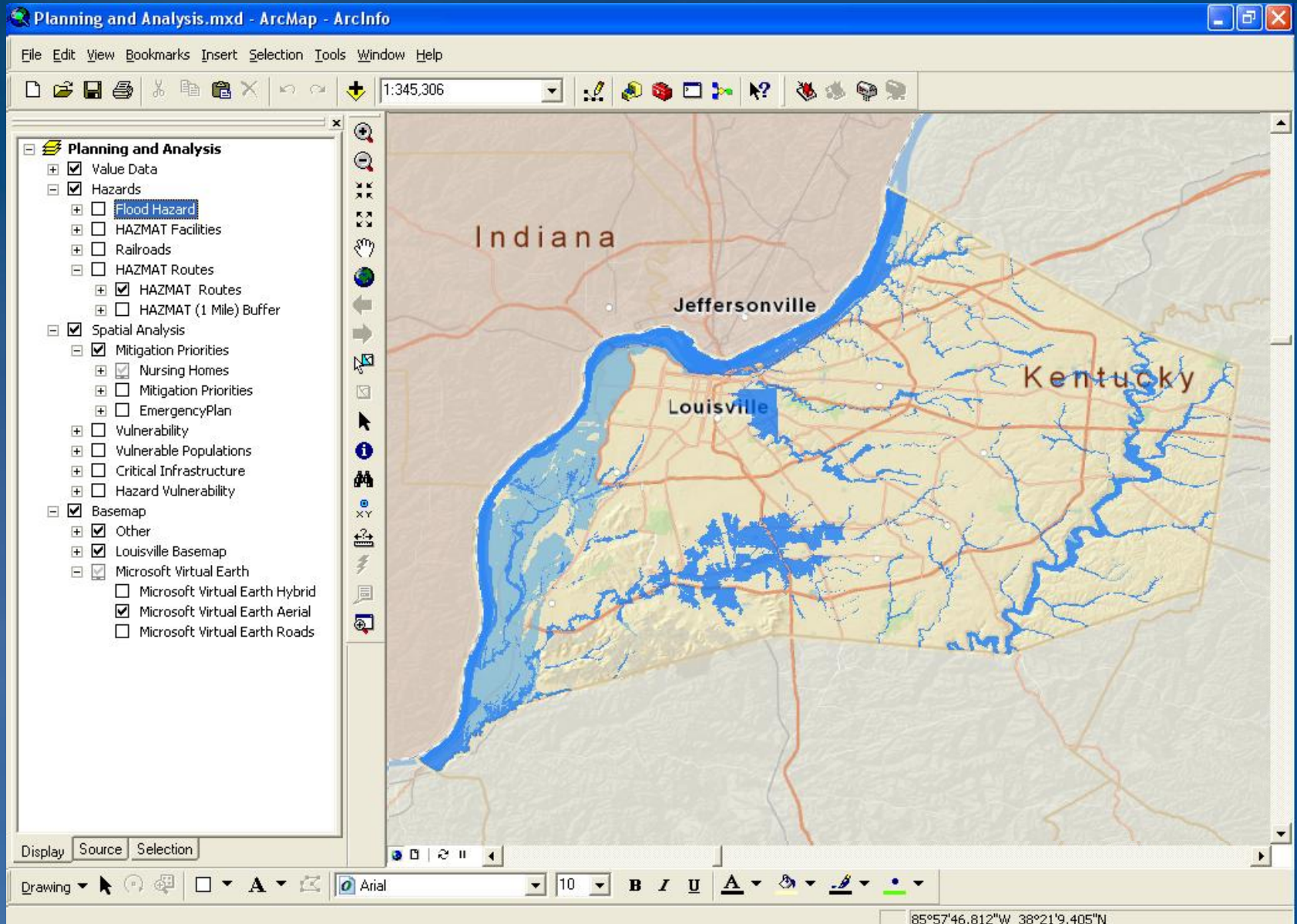


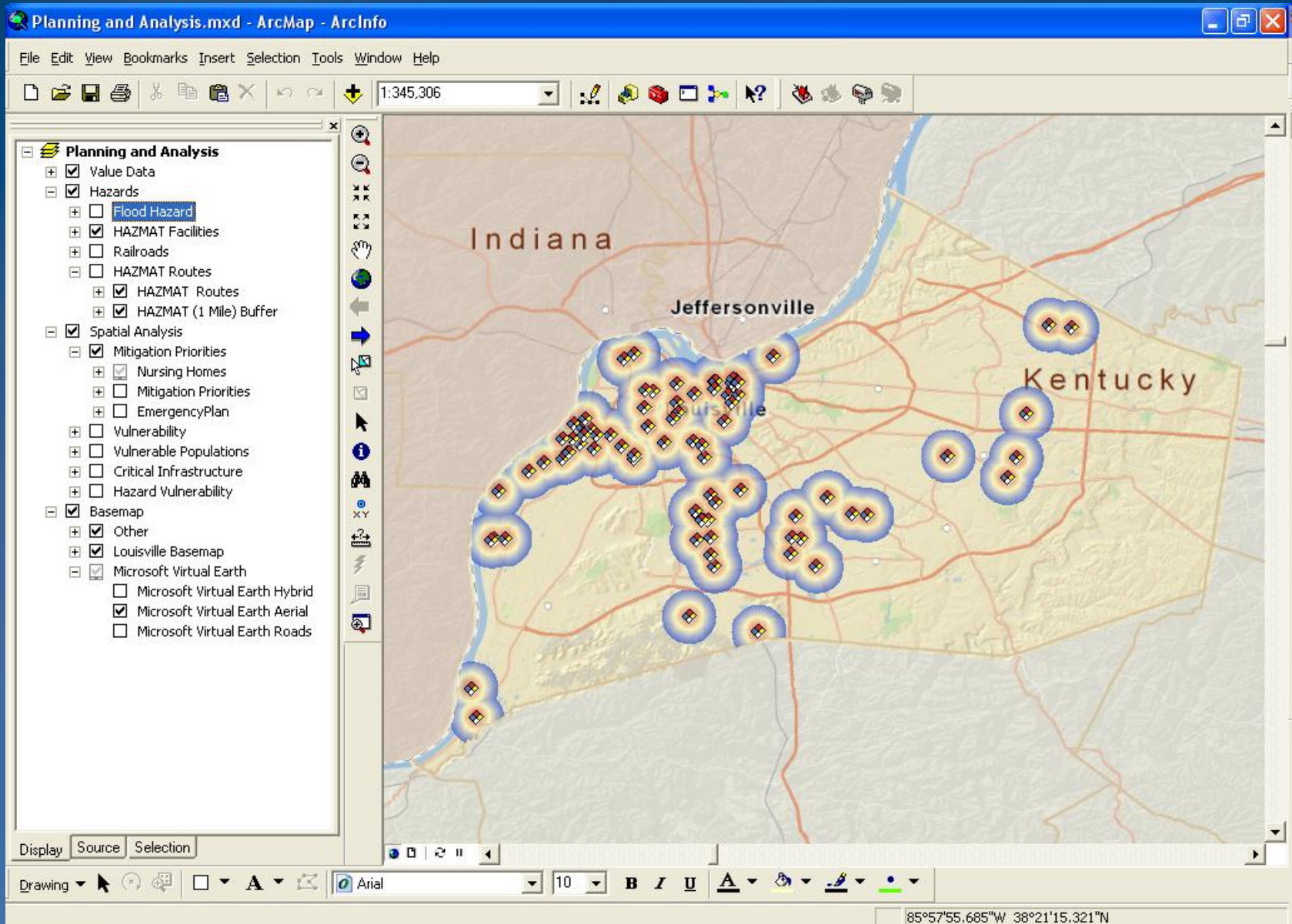


GIS for Emergency Management

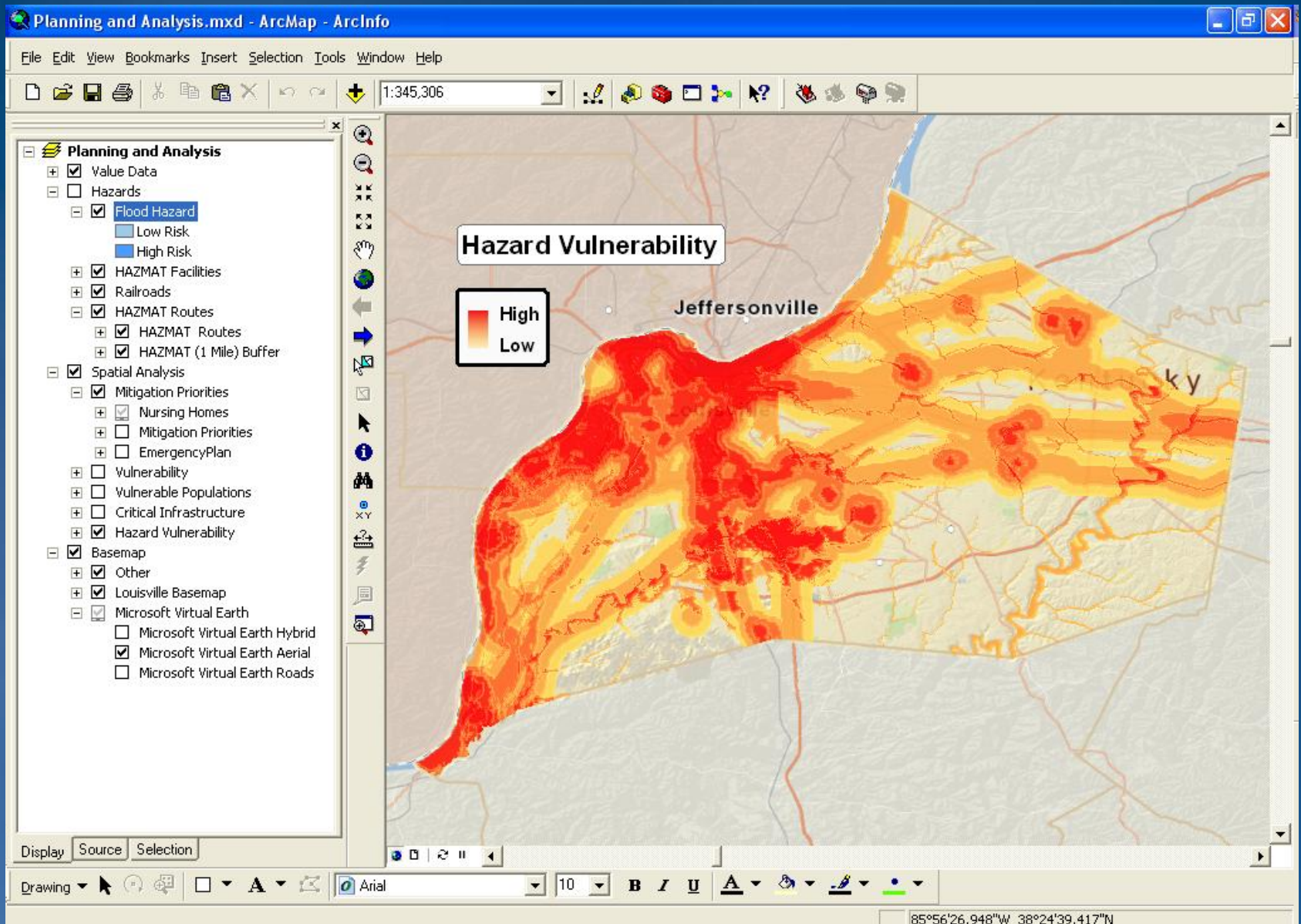
Assessment – Natural Hazards



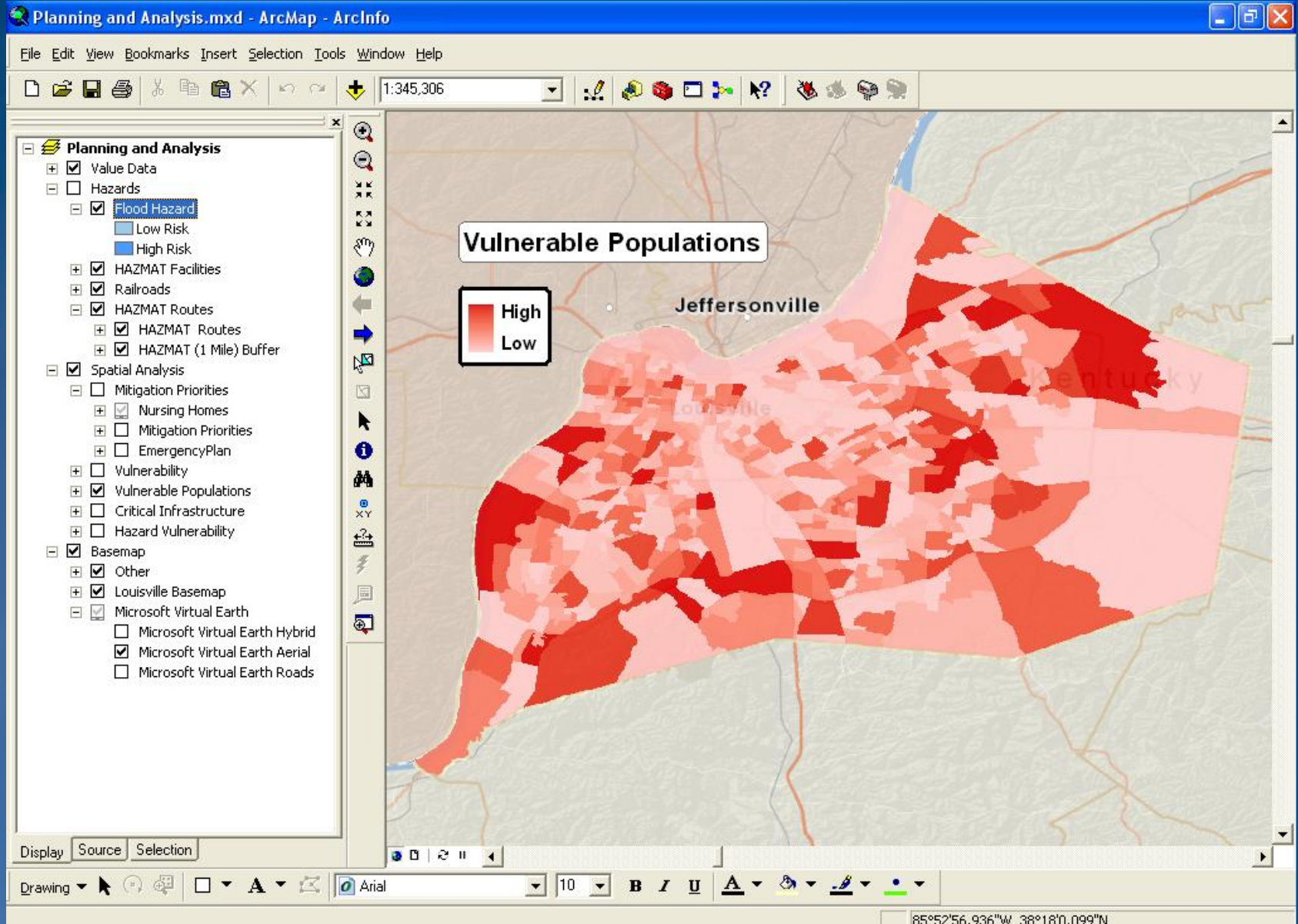
Assessment – Technological Hazards



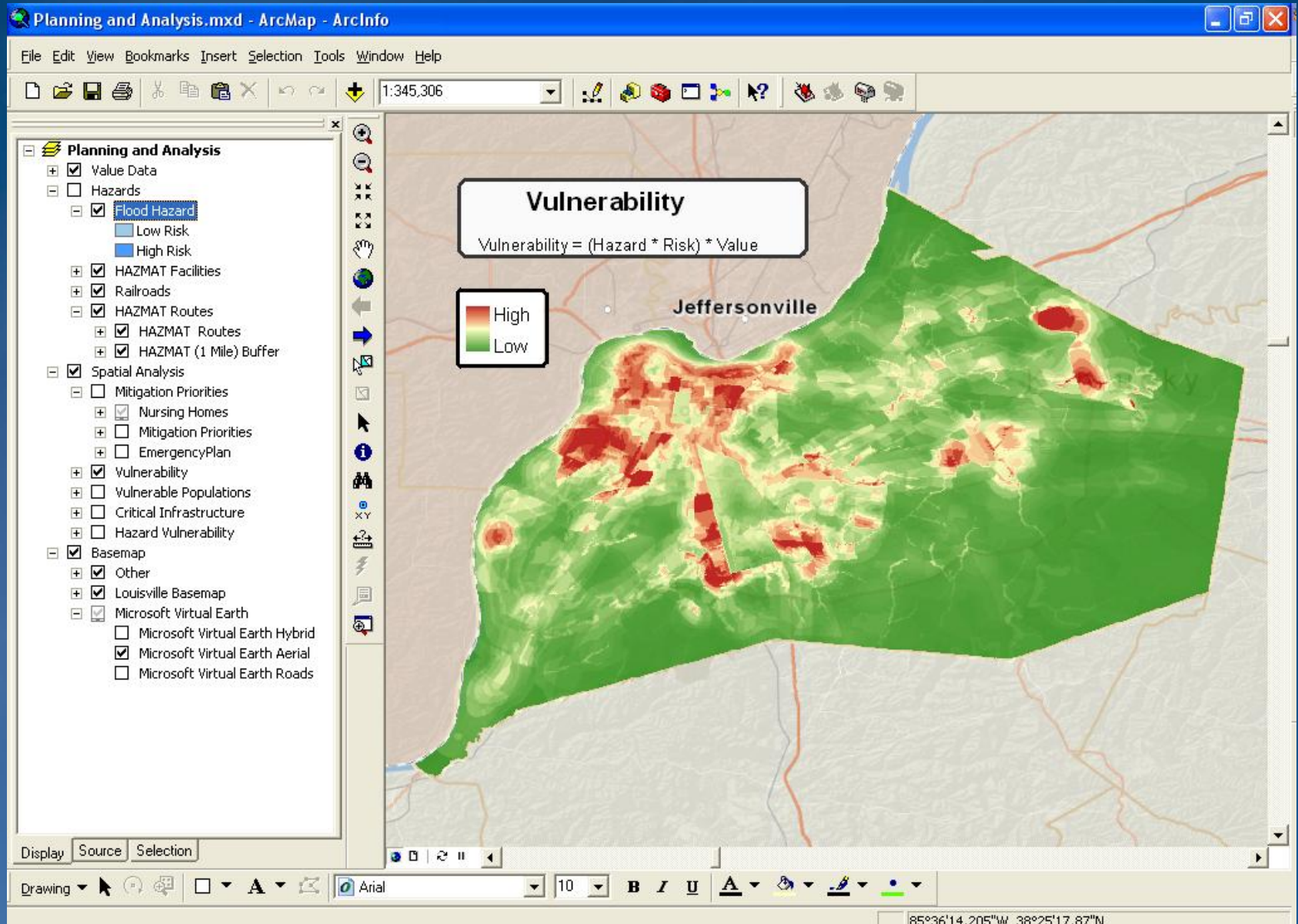
Assessment – All Hazards



Assessment – Values



Assessment – Overall Value Exposure



Prioritizing Mitigation and Response

The screenshot displays the ArcMap interface with the following elements:

- Title Bar:** Planning and Analysis.mxd - ArcMap - ArcInfo
- Menu Bar:** File, Edit, View, Bookmarks, Insert, Selection, Tools, Window, Help
- Toolbars:** Standard ArcGIS toolbars and a toolbar with a scale of 1:23,615.
- Layer List (Left Panel):**
 - Planning and Analysis
 - Value Data
 - Hazards
 - Flood Hazard
 - Low Risk
 - High Risk
 - HAZMAT Facilities
 - Railroads
 - HAZMAT Routes
 - HAZMAT Routes
 - HAZMAT (1 Mile) Buffer
 - Spatial Analysis
 - Mitigation Priorities
 - Nursing Homes
 - Mitigation Priorities
 - EmergencyPlan
 - Vulnerability
 - Vulnerable Populations
 - Critical Infrastructure
 - Hazard Vulnerability
 - Basemap
 - Other
 - Louisville Basemap
 - Microsoft Virtual Earth
 - Microsoft Virtual Earth Hybrid
 - Microsoft Virtual Earth Aerial
 - Microsoft Virtual Earth Roads

- Map View:** A map showing a facility response plan for Home Instead Senior Care. The plan includes the address 1512 Crums Lane, Suite 103, Louisville, KY 40216. The map shows a vulnerability layer with red and yellow areas. A red circle highlights a specific area, and a green circle highlights another area. The text "Home Instead Senior Care" is prominently displayed. The year "2007" is visible in a blue circle. The text "Prepared by: City of Louisville, December 2007" is at the bottom.
- Bottom Panel:** Drawing toolbar and a status bar showing coordinates: 85°48'24.954"W 38°12'18.45"N