

Joint Committee on State Building Construction



Presented by Secretary Jeff Zmuda
December 16, 2024

Agenda

- East Campus at Lansing
- Topeka Correctional Facility
- Facility Investments
- Deferred Maintenance
- Five-Year Plan
- Lansing Select Razing Project and New Warehouse
- Hutchinson Correctional Facility





East Campus at Lansing Correctional Facility

- Ribbon Cutting Oct. 25, 2024
- First substance use recovery/work release unit operated by KDOC
- 200-bed minimum-security unit providing comprehensive reentry program
- Funded by the Legislature after Governor Kelly included it in the Governor's Budget Recommendation in FY2021



3



Environment Matters

East Campus at Lansing Correctional Facility

4

Topeka Correctional Facility Support Services Building

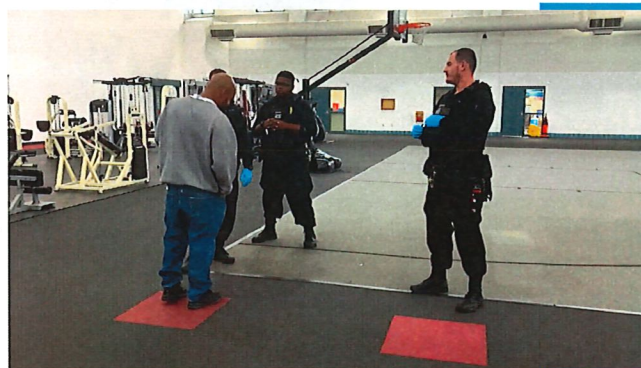
- State-of-the-Art multipurpose medical/behavioral health/support services
- Will improve access to behavioral health and health care services for residents while centralizing other functions
- During 2024 Legislative Session, KDOC received a bonding authority for \$40,235,000 for construction
- FY2026 Debt Service for Bond: \$2.97 million
- Architectural firms interviewed and design anticipated to begin in January



5

Facility Investments

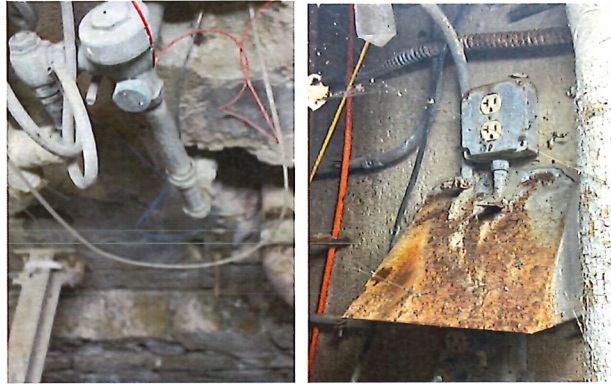
- Topeka Correctional Facility:
 - New Support Services Building
 - Sewer Line Replacement
 - Lift Station Installation
 - Remodel of Kitchen
- El Dorado Correctional Facility:
 - New fire alarm system
 - Touch screen replacements
- Hutchinson Correctional Facility:
 - New fire alarm system
- Oswego Correctional Facility:
 - HVAC Improvements
- Larned Correctional Facility:
 - Paving Project
- New Kansas Correctional Industries Building at Lansing Correctional Facility
- New Kansas Correctional Industries Building at Topeka Correctional Facility
- New Kansas Correctional Industries Building at Winfield Correctional Facility in 2025



6

Deferred Rehabilitation and Repair Costs

- Deferred Rehabilitation and Repair Costs
- \$4.3 million allocated via the Correctional Institution Building Fund
- \$8.6 million requested to help address backlog



7



Major Capitol Programs: Five-Year Capital Improvements Plan

- FY2026:
 - Replace Hutchinson Correctional Facility
 - Select Lansing Razing Projects
 - Construct New Warehouse at Lansing
 - Convert H Building at Topeka Correctional Facility for Work Release
 - Construct New Laundry at Topeka
- FY2027:
 - Replace Wichita Work Release Facility
 - Renovate School Building at KJCC for Training Center
- FY2028:
 - New Vocational Building at KJCC
 - Replace B Unit at Norton Correctional Facility

8

Select Lansing Razing Projects

- Select unoccupied buildings in the original facility
- Remove south entrance wall, to include current warehouse
- Construct 25,000 square foot metal building for use as a new warehouse



9

Hutchinson Correctional Facility History



- Construction began in 1885; completed in 1895 with a single 50-man cellhouse
- Originally known as the Kansas State Industrial Reformatory
- Second cellhouse completed in 1906
- Became the Hutchinson Correctional Facility in 1990
- Now, the state's third-largest facility housing adult males with a capacity of 1,778 residents



10



Hutchinson Correctional Facility Issues

Currently 598 40- to 48- square foot cells. (The American Correctional Association recommends a minimum of 70 feet.)

Antiquated design and mechanical systems

No air conditioning in most areas

Not compliant with the American With Disabilities Act



11



The Kansas Department of Corrections is seeking to construct a new Hutchinson Correctional Facility. The cost of construction is estimated to be about \$453 million. If the project were to be bonded, the annual debt service is estimated to be \$32.45 million for 20 years.

12



