

J. Russell (Russ) Jennings Joint Committee on Corrections and Juvenile Justice Oversight

Presented by Secretary Jeff Zmuda

November 19, 2024



Agenda

Staffing

Population

Educational Programming

Digital Upgrades and Communications

Capitol Improvements

Reentry and the KDOC Institute

Potential Nursery – Topeka
Correctional Facility





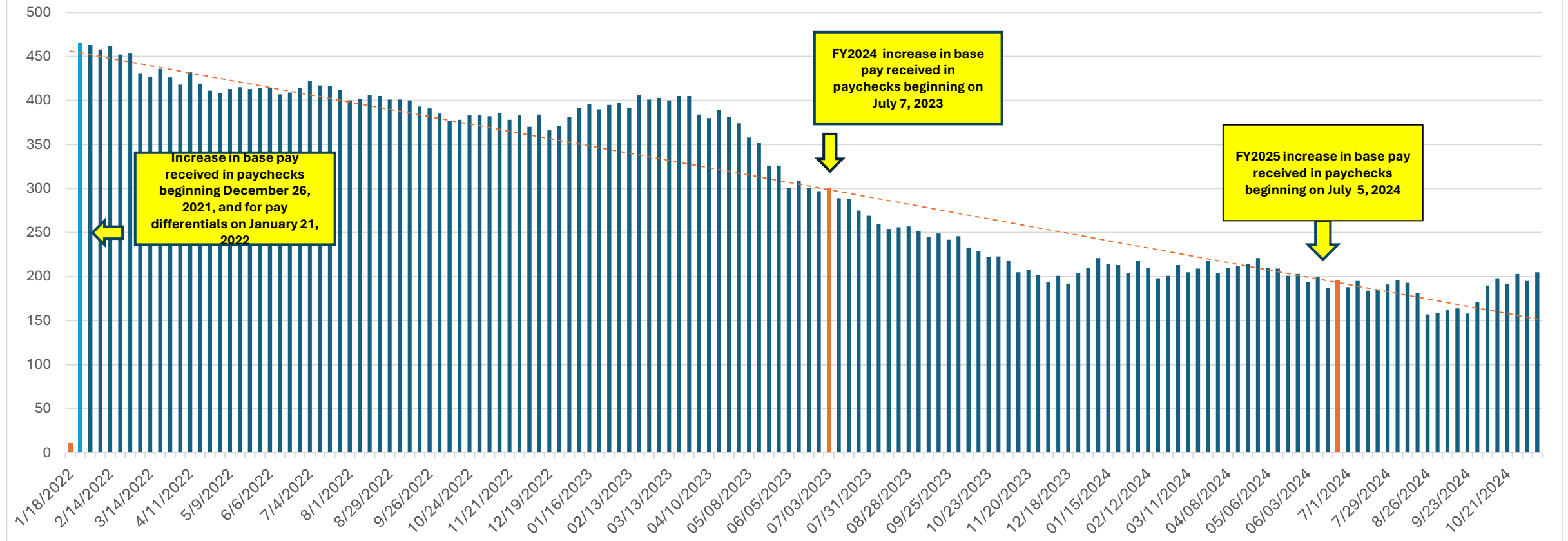
Staffing Levels

- Steady and improving
 - Increased competitiveness in the labor market
 - Multiple years of investment in staff compensation by the Governor and the Legislature

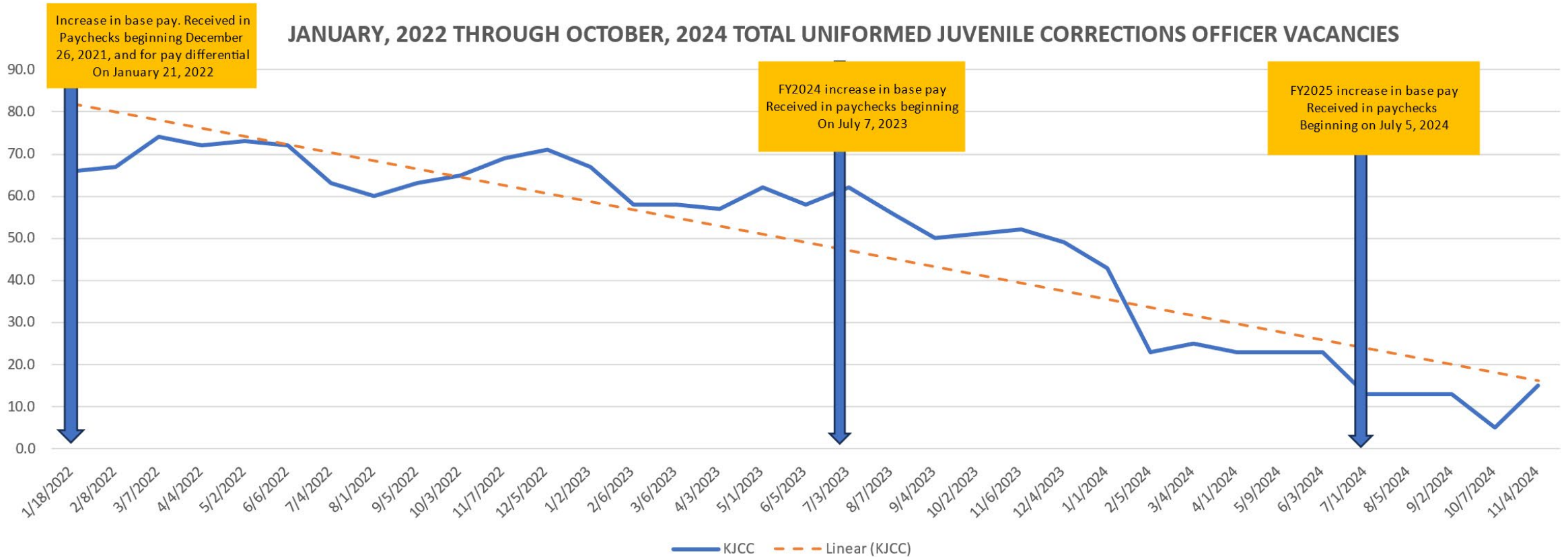
Uniformed Vacancies – Adult Facilities



JANUARY, 2022 THROUGH OCTOBER, 2024 TOTAL UNIFORMED ADULT CORRECTIONS OFFICER VACANCIES

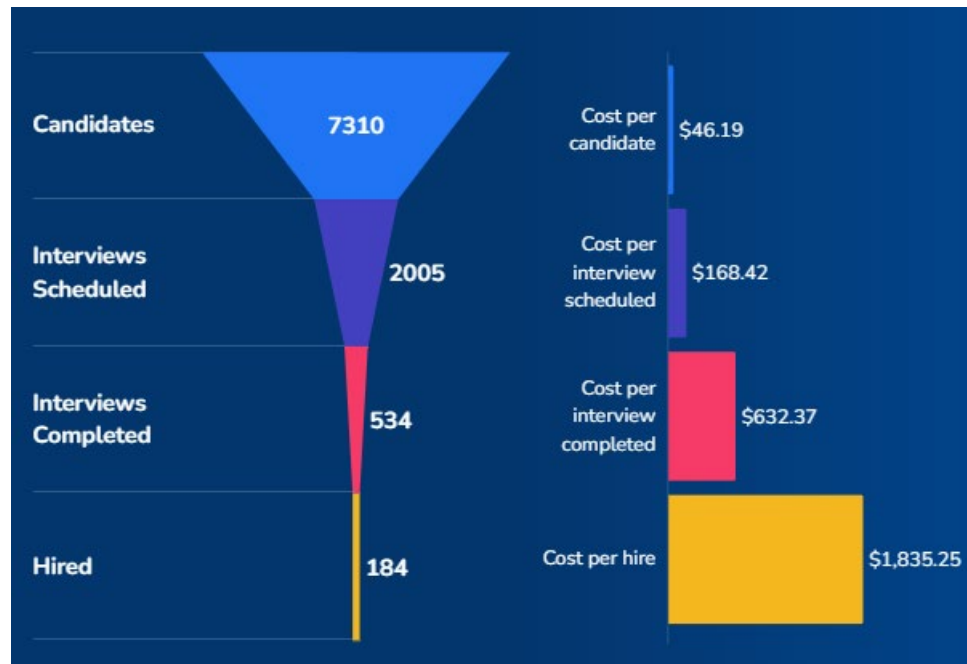


Kansas Juvenile Correctional Facility (KJCC) Uniformed Officer Vacancies



Recruiting

- All Star Talent Recruiting
- All Facilities Online
- Parole Regions Coming Online Soon



All Facilities, Oct 5, 2023 – Nov. 5, 2024





Retention Efforts

- State-wide employee pay raise – THANK YOU!
- Uniform Upgrades
- Workplace Environment



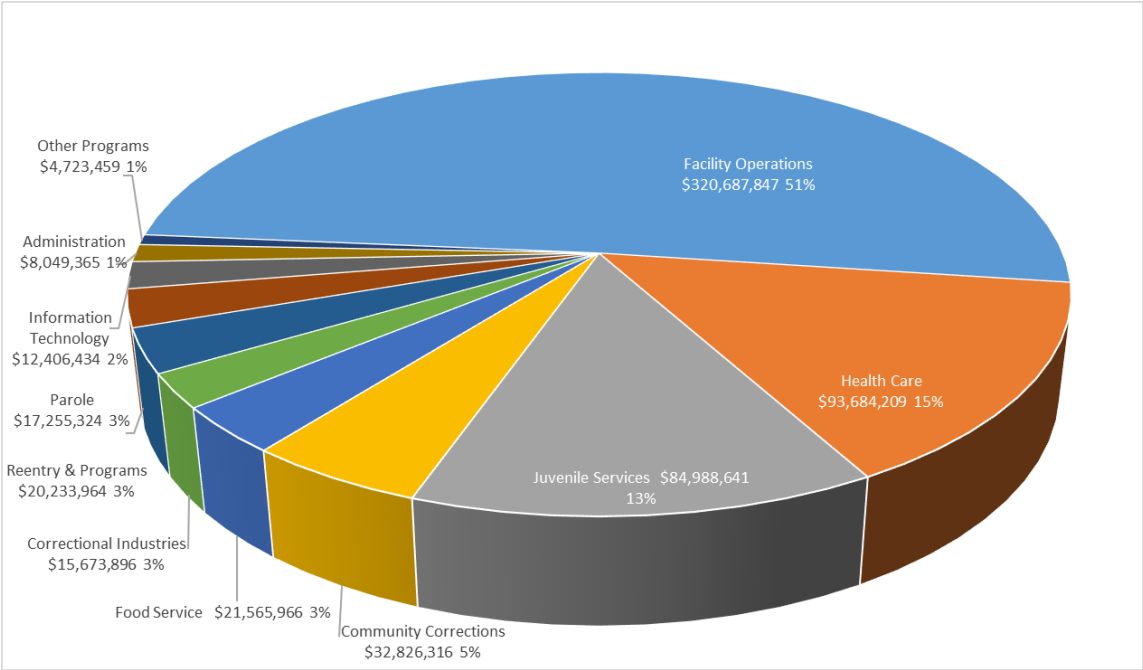


Adult Population

- Population Steadily Increasing
- Adult Population, January 1, 2024: 8,964
 - Males: 8,179
 - Females: 785
- On November 1, 2024, population was 9,568.

KDOC Operating Costs

- Food Costs (Aramark Contract) Increase
 - FY2026 - \$1.7 Million
- FY2024 Cost Per Resident Per Day: \$109.97
- FY2024 Cost Per Resident Per Year: \$40,138



KDOC FY2025 Approved Operating Budget





Centurion Medical Contract

- FY25 Cost: \$5.4 Million
- FY26 Cost: \$8.3 Million



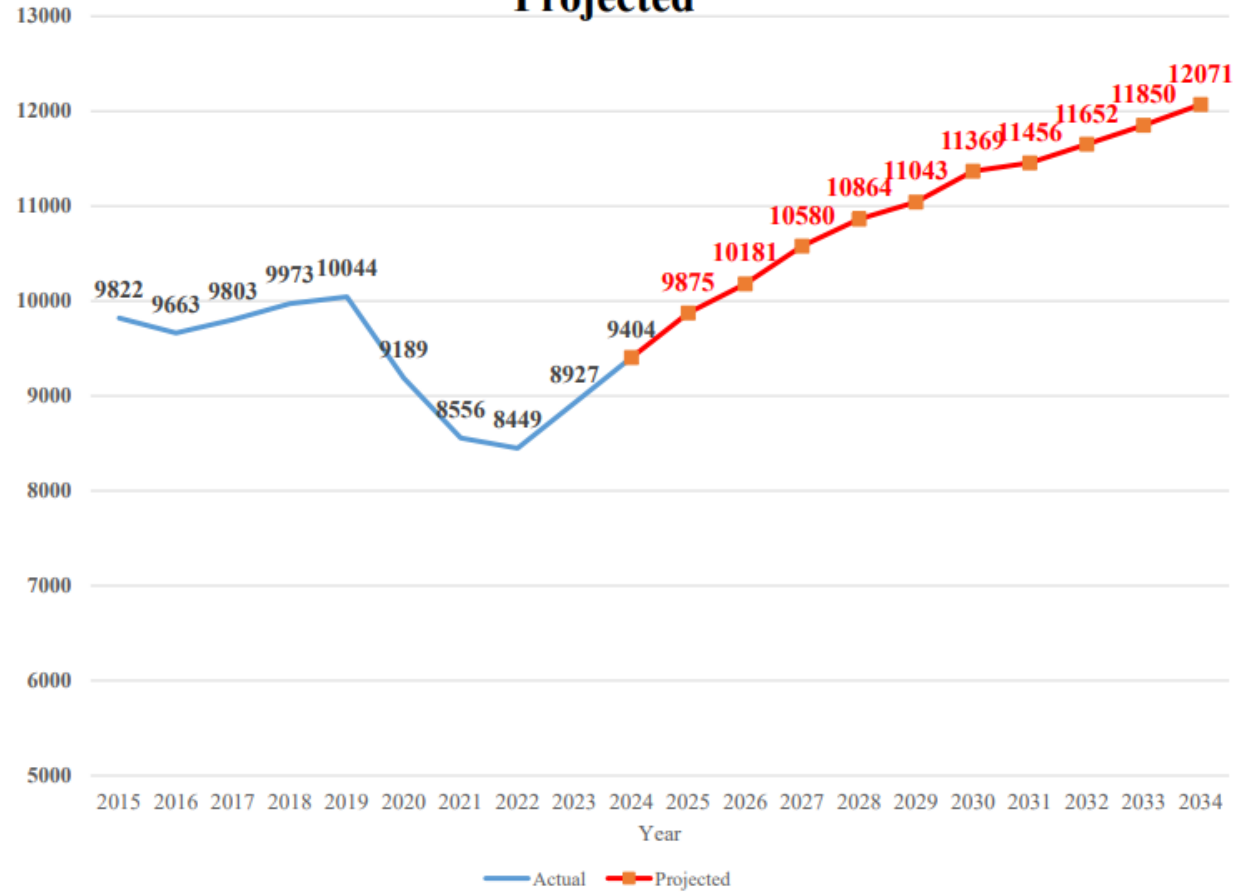
Adult Correctional Facility Capacity FY2025-2033

- In FY2024, new commitments accounted for 76.3% of admissions projections from the Kansas Sentencing Commission
- Kansas will exceed bed capacity within the next ten years



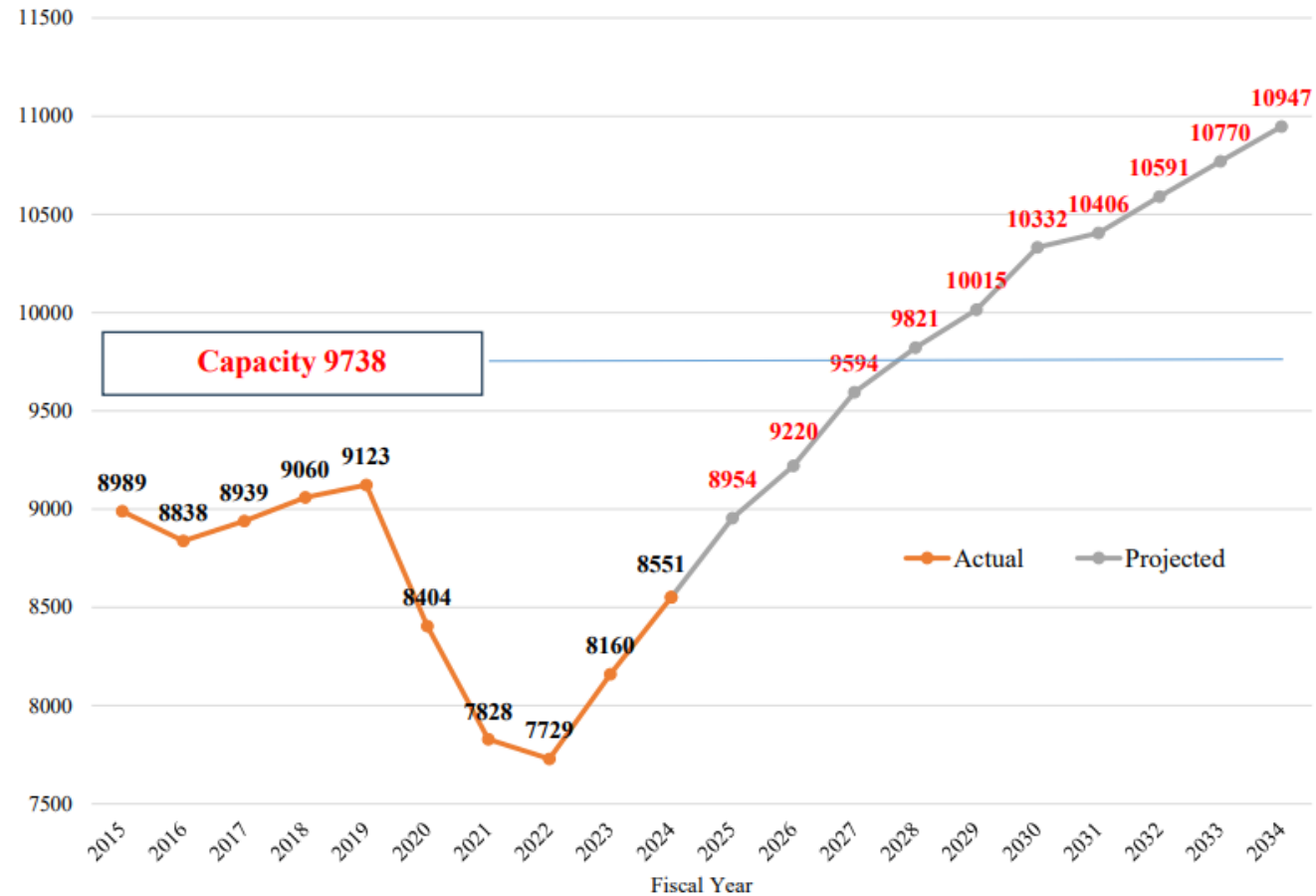
Population Projections – Kansas Sentencing Commission

Figure 1: KS Prison Population - Actual and Projected



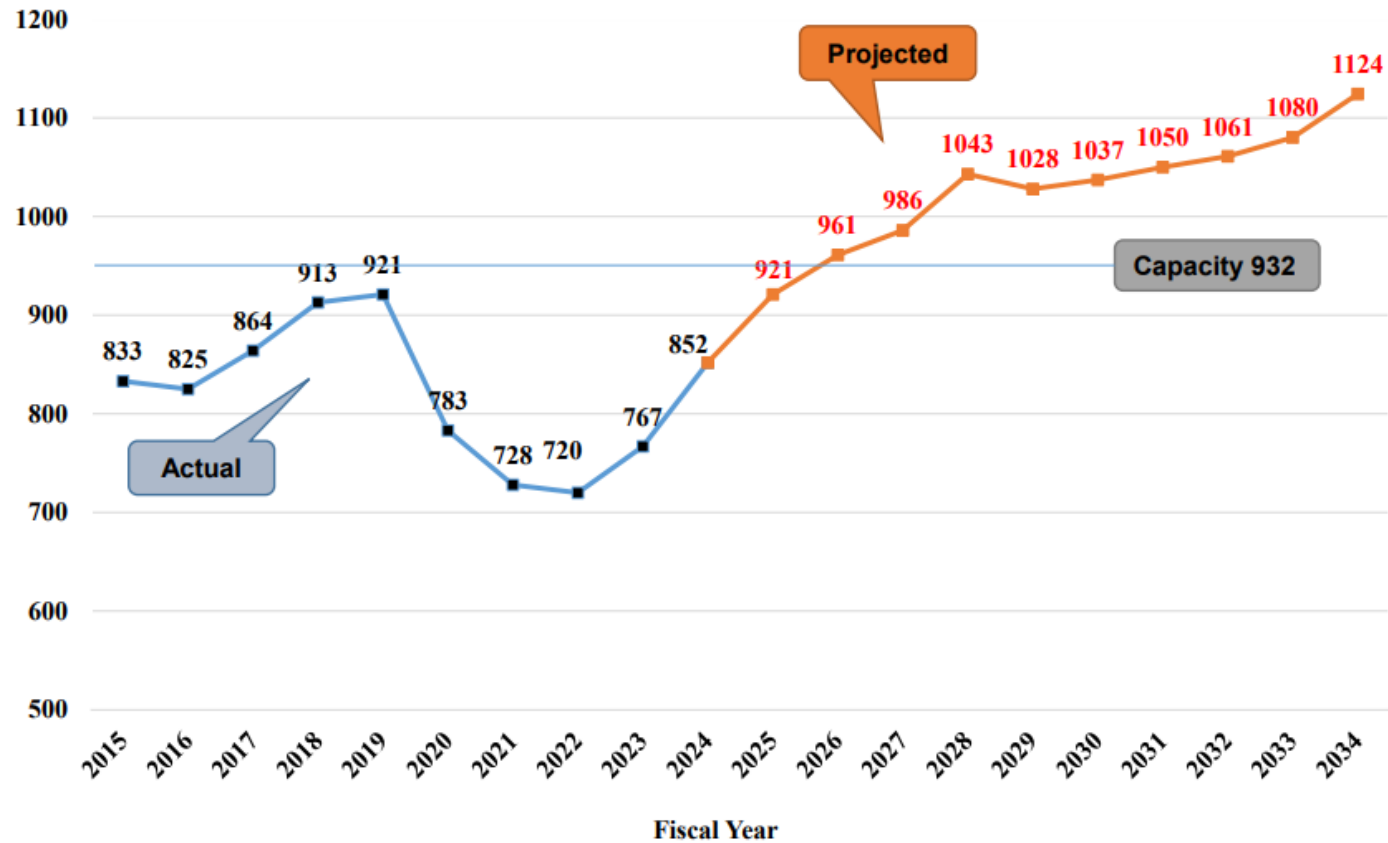
Population Projections – Kansas Sentencing Commission

Figure 2: **Male** Prison Population - Actual and Projected



Population Projections – Kansas Sentencing Commission

Figure 3: **Female** Prison Population - Actual and Projected



Educational Programming

- Post-secondary education in the KDOC (2001-2020)
 - 7,503 enrolled students
 - 749 degrees/certificates
- On average, 375 students and 37 degrees/certificates completed each year

- VERSUS

- Four years of post-secondary education in the KDOC (2020-2024)
 - 2,714 enrolled students
 - 1,095 degrees/certificates
- On average, 679 students and 274 degrees/certificates completed per year





Educational Programming

- Welding
 - Including Virtual Training
- Forklift certifications
- Alternative Energy program
 - Farming
 - Energy Efficiency
 - Basic Construction
- Onsite Industrial Training Partners
- Work Release Training
- Ten education institution partners
- **A GED/High School Diploma increases gainful employment by 65%, and having an industry job while incarcerated increases employment by 25%. These individuals are a third LESS LIKELY to return to prison.**



Resident Work Opportunities

- Build upon current successes by increasing opportunities
- Facility work assignments
- Traditional industries
- Private industry
- Work release





East Campus at Lansing Correctional Facility

- Ribbon Cutting Oct. 25, 2024
- First substance use recovery/work release unit operated by KDOC
- 200-bed minimum-security unit providing comprehensive reentry program
- Funded by the Legislature after Governor Kelly included it in her Governor's Budget Recommendation





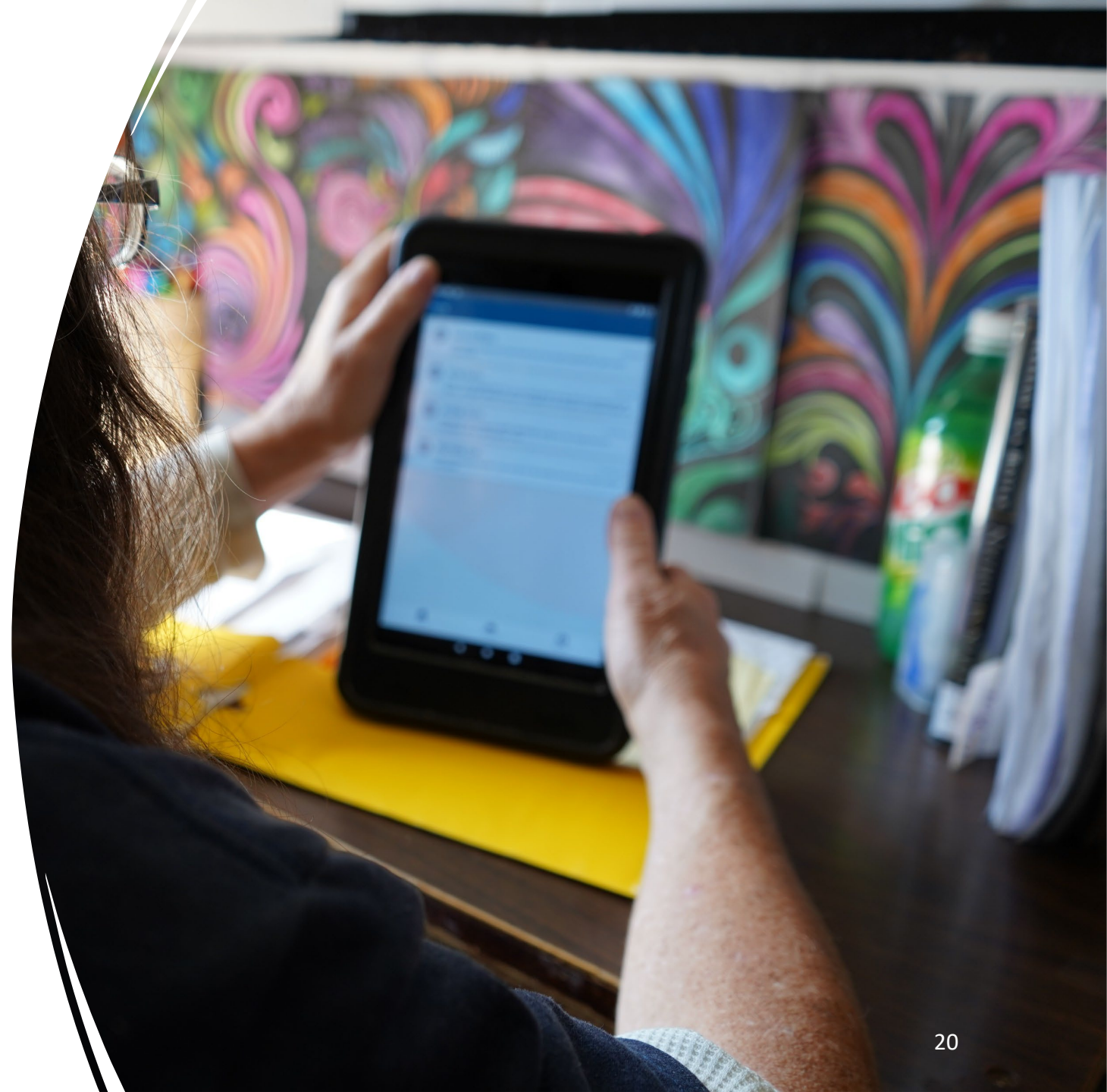
Environment Matters

East Campus at Lansing Correctional Facility



Athena

- Multi-year project to replace legacy offender management systems (juvenile and adult)
- Combined with staff and resident Wi-Fi, an investment to enable staff to do work in real time in the future
- Anticipate Go Live in February 2025



Facility Telephones for Residents



- Federal Communications Commission proposed a phone rate reduction for residents
 - Final decision to be made in 2025
 - Would not impact current contract but may impact future contracts
- Current phone contract expires on May 31, 2025



Major Capitol Programs: Five-Year Capital Improvements Plan



- FY2026:
 - Replace Hutchinson Correctional Facility
 - Select Lansing Razing Projects
 - Construct New Warehouse at Lansing
 - Convert H Building at Topeka Correctional Facility for Work Release
 - Construct New Laundry at Topeka
- FY2027:
 - Replace Wichita Work Release Facility
 - Renovate School Building at KJCC for Training Center
- FY2028:
 - New Vocational Building at KJCC
 - Replace B Unit at Norton Correctional Facility



Facility Investments

- Topeka Correctional Facility:
 - New Support Services Building
 - Sewer Line Replacement
 - Lift Station Installation
 - Remodel of Kitchen
- El Dorado Correctional Facility:
 - New fire alarm system
 - Touch screen replacements
- Hutchinson Correctional Facility:
 - New fire alarm system
- Oswego Correctional Facility:
 - HVAC Improvements
- Larned Correctional Facility:
 - Paving Project
- New Kansas Correctional Industries Building at Lansing Correctional Facility
- New Kansas Correctional Industries Building at Winfield Correctional Facility in 2025





Adult Reentry

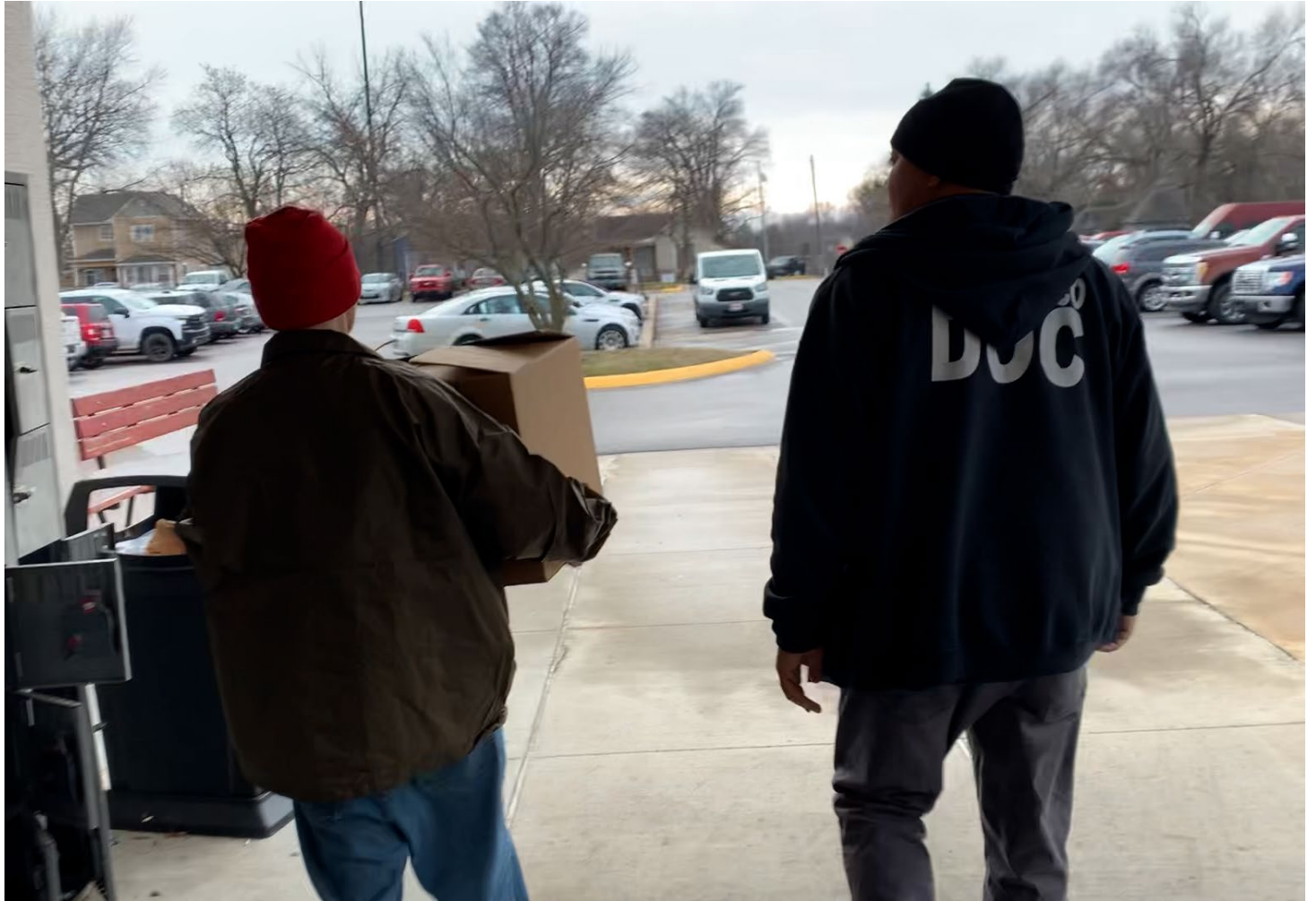
- 95% of residents will return to the community.
- Providing opportunities for residents to reenter society successfully is essential to public safety.
- KDOC needs for success:
 - Maximize access to higher education and industry-recognized certifications
 - Continue to expand workforce development through private industry opportunities



Adult Reentry

Community need for success:

- Increase access to substance abuse and mental health services
- Improve availability and access to safe, affordable housing and specialized housing for high-needs individuals
- Expand access to employment for previously incarcerated individuals
- Educate employers on the benefits of hiring returning citizens





KDOC Institute

- 501(c)(3) organization
- Proposed Location: Lansing Correctional Facility
- 50% funding match by the State; 50% funding to be raised from private donors (\$40 million total)
 - **Legislative Language Change Needed**
- Education and workforce training center that will provide a broad range of adult education, career and technical education, college degree and career-readiness programs
- Visit to Michigan Department of Corrections Vocational Villages





Women's Activity Learning Center Retreat,
October 2024

Potential Nursery at Topeka Correctional Facility



- Would be a natural expansion of current Women's Activity and Learning Center
 - Child development, parenting, and prenatal education
 - Provides a "home-like" environment for children to visit their incarcerated mothers
- Activated a working group with Senator Kristin O'Shea and local activists and supportive parties
- Preparing data and proposals for an upcoming 5-Year Capitol Improvement Plan
- KDOC preparing a program statement
- No legislation required

Potential Nursery at Topeka Correctional Facility



Women's Activity Learning Center
Retreat, October 2024

- Potential Design Discussed with Stakeholders:
 - Play area in the center of the facility
 - 10 individual rooms with baby beds, rocking chairs, etc.
 - Kitchenette
 - Bathroom with a shower and a tub
 - Additional rooms for onsite caretakers
 - Laundry room with multiple washers and dryers
 - Communal dining room
 - Private medical exam room
 - Two supply rooms:
 - Baby clothes
 - Baby supplies
- Next Steps
 - Determine programming to include parenting classes
 - Develop resident qualifications while considering work and education/programming schedules
 - Determine length of stay
 - Next meeting: Early 2025





Thank You!

