



# **Hutchinson Correctional Facility Replacement Request**

---

**Presented by Jeff Zmuda  
Kansas Secretary of Corrections  
November 19, 2024**

# HCF History

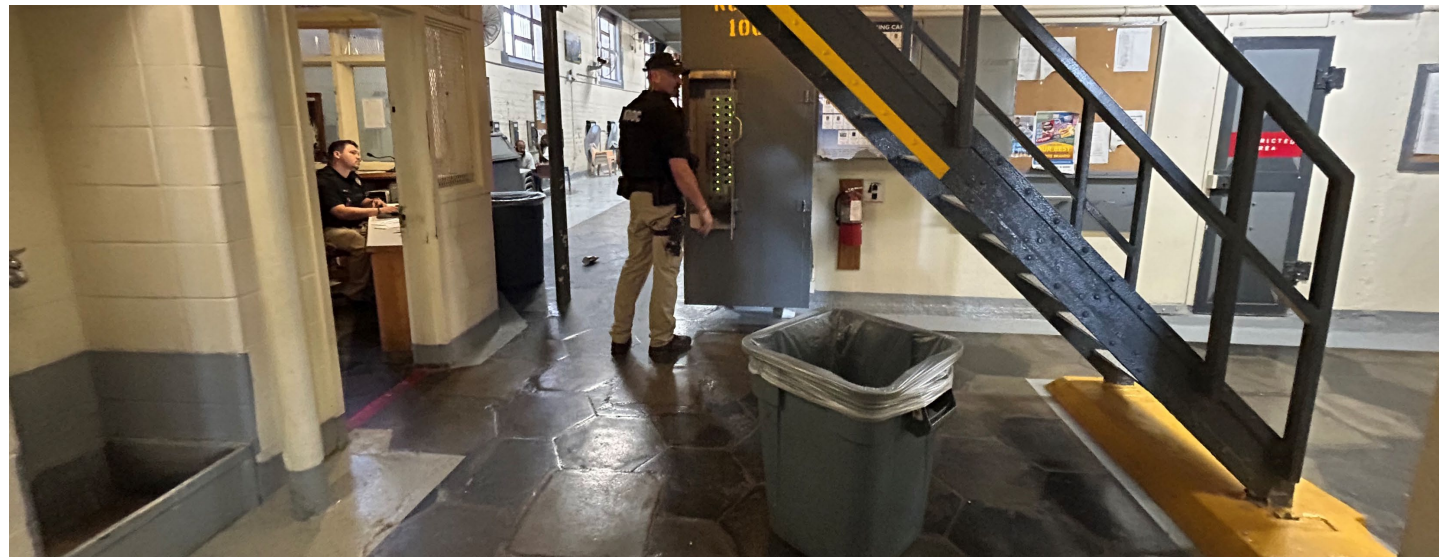


- Construction began in 1885; completed in 1895 with a single 50-man cellhouse
- Originally known as the Kansas State Industrial Reformatory
- Second cellhouse completed in 1906
- Became the Hutchinson Correctional Facility in 1990
- Now, the state's third-largest facility housing adult males with a capacity of 1,778 residents

# HCF Today

## Custody Levels:

- Maximum (Central Unit)
- Special Management (Central Unit)
- Medium (East Unit)
- Minimum (South Unit)





- Covers 274 Acres
- Employs 507 full-time state employees and more than 85 contract employees
- Annual operating budget: \$47.3M





# HCF Issues



There are 598 40- to 48-square foot cells. (The American Correctional Association recommends a minimum of 70 feet.)

Antiquated design and mechanical systems

## HCF Issues

No Air  
Conditioning in  
Most Areas

Not Compliant  
with the  
Americans With  
Disabilities Act



No fire protection systems in wooden construction minimum and medium units





Extensive repair and replacement costs related to the infrastructure and maintenance of the current facility



# HCF Assessment



Facilities conditions assessment by a national firm indicated that improvements would not be as cost effective as replacement





### Identified Capital Needs, Hutchinson Correctional Facility

	<u>Immediate Needs (Year 1)</u>	<u>Future Needs (Year 2-10)</u>	<u>Total</u>
Central	\$ 30,104,384	\$ 16,600,548	\$ 46,704,932
South	\$ 4,674,559	\$ 2,751,863	\$ 7,426,422
East	\$ 10,504,937	\$ 15,557,318	\$ 26,062,255
<b>Total</b>	<b>\$ 45,283,880</b>	<b>\$ 34,909,729</b>	<b>\$ 80,193,609</b>

Note: The \$80M would only address existing infrastructure issues. It would not bring the facility up to ADA standards, retrofit air conditioning into the housing units, or address the cell sizes, nor does it address any potential hazardous materials likely to be discovered during a renovation.

Amounts shown are in 2021 dollars. Does not include design fees, contractor overhead and profit, or management costs



**The “overall condition of all the buildings is fair to poor,” and “due to various stages of decline, total renovations would be costly.”**

**HCF “is over a century old...CGL recommends these facilities be considered for replacement rather than renewal.”**

**- Carter Global Lee  
August, 2021**

# HCF Plan

- New facility to be constructed on land owned by the Department of Corrections
- Increase beds to 2,192 (an increase of 414)
- 20,000 square feet of program space



# Construction Location Details

- The proposed new site will be south of the current facility on the other side of the tree line at the arrow
- The City of Hutchinson has referenced a potential alternate location and land swap



Photography Credit:  
CPT Seve Lutz  
Officer Jeremy Vanwey  
Reno County Sheriff's Office





**The Kansas Department of Corrections is seeking to construct a new Hutchinson Correctional Facility. The cost of construction is estimated to be about \$453 million**



# Thank You!

